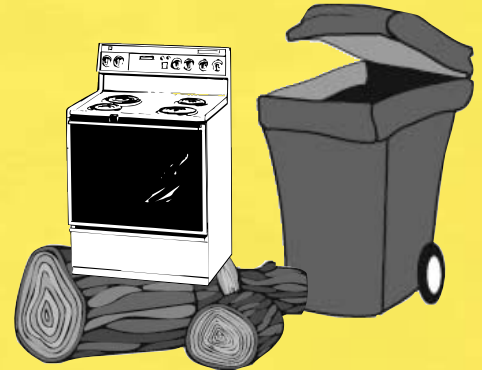


# NEW GARBAGE AND TRASH COLLECTION

**Effective September 1**, Iberville Parish will have a new contractor for collection of residential garbage and trash. The Parish has contracted with SWDI, LLC to provide this service. The only change for residents is that curbside recycling will be eliminated, but will be offered at designated locations. This flyer provides you with the information you need to know about your solid waste collection service with SWDI. Solid waste disposal is funded by a 1/3 cent sales tax approved by parish voters.

## What Stays The Same?

Residential collection days for **garbage and boom truck services will remain the same**. Garbage will continue to be collected twice weekly. The boom truck, which collects bulky yard waste and white goods such as appliances, will continue to run once weekly. Contractor debris will not be collected. (See other side for proper trash preparation.)



## What Changes? Recycling

The parish will no longer provide residential recycling collection. Instead, recycling points have been set up throughout the parish where residents who wish to recycle can bring items for recycling.

The locations and hours of operation are:

### **NORTH IBERVILLE:**

Locations: Rosedale, Grosse Tete and Maringouin Town Halls

Hours: Mondays, 7:30 a.m.-2:30 p.m.

### **PLAQUEMINE AREA:**

Location: Iberville Parish Maintenance Facility on Bayou Road

Hours: Tuesdays & Wednesdays, 7:30 a.m.-2:30 p.m. and

Saturdays, 8 a.m.-Noon

### **SOUTH IBERVILLE:**

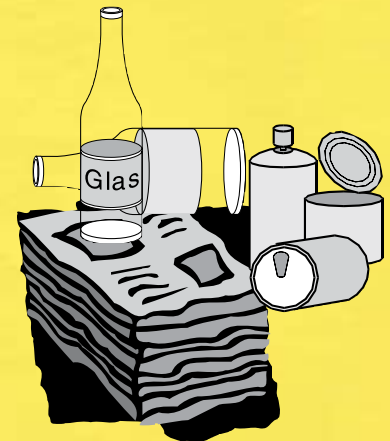
Location: Town of White Castle Maintenance Facility

Hours: Thursdays, 7:30 a.m.-2:30 p.m.

### **EAST IBERVILLE**

Location: St. Gabriel Town Hall

Hours: 7:30 a.m.-2:30 p.m.



Accepted items at recycling locations: paper, newspaper, glass, plastic, aluminum and tin.

## What To Do If You Have A Problem:

If your garbage or bulky waste is not collected on schedule, call SWDI, LLC to report it. The phone numbers are:

1-877-851-0278

225-618-0025

If action is not taken to rectify the problem within a few days, call the Iberville Solid Waste Department at 692-3844.

## Holidays:

Garbage will not be picked up on the following holidays:

Thanksgiving

Christmas

New Year's Day

Mardi Gras

## How to package debris, trash for collection:

- Garbage containers should not weigh more than 60 pounds.
- Tree limbs and tree debris should be tied securely in bundles not longer than 6 feet long or 2 feet in diameter. They should not weigh more than 75 pounds. Tree stumps and large tree limbs should be cut into sections weighing not more than 75 pounds.
- Leaves and grass clippings should be placed in garbage containers, bags or suitable containers and placed next to the garbage containers.
- Do not mingle white goods, such as appliances and furniture, with trash and garbage. They will be picked up by the weekly boom truck service.
- Contractor debris WILL NOT be collected. Any debris from contractors, such as tree services, home construction or remodelers, roofers, carpet installers, landscapers, air conditioning and heating contractors or other contractors must be disposed by the contractor or property owner.

## What won't be collected:

Garbage and trash will not be collected from vacant lots or land clearing. The property must have an occupied residential dwelling where utilities are provided.

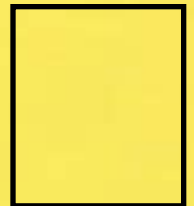
The following items should not be put in your garbage or trash: Hazardous wastes, such as paint thinners, turpentine, anti-freeze, solvents and oil based paints; batteries, motor oil, gas tanks, butane tanks, chemicals, grease, tires and engines. For information on disposal of these items, call the Solid Waste Department at 692-3844.

## Used tire disposal:

The Solid Waste Department will accept used tires from individuals for disposal. Tires should be brought to the Solid Waste Office, located at 59705 Bayou Road in Plaquemine (adjacent to the Parish Maintenance Facility). The individual's name, address, telephone number, the number of tires (limit 5 per day), date, time of drop off, and the individual's signature will be recorded. Tires with rims are not accepted.



**Iberville Parish Council**  
58050 Meriam Street  
P.O. Box 389  
Plaquemine, LA 70765-0389



**Important Garbage Collection Information Inside!  
Please Read!**